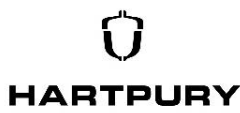
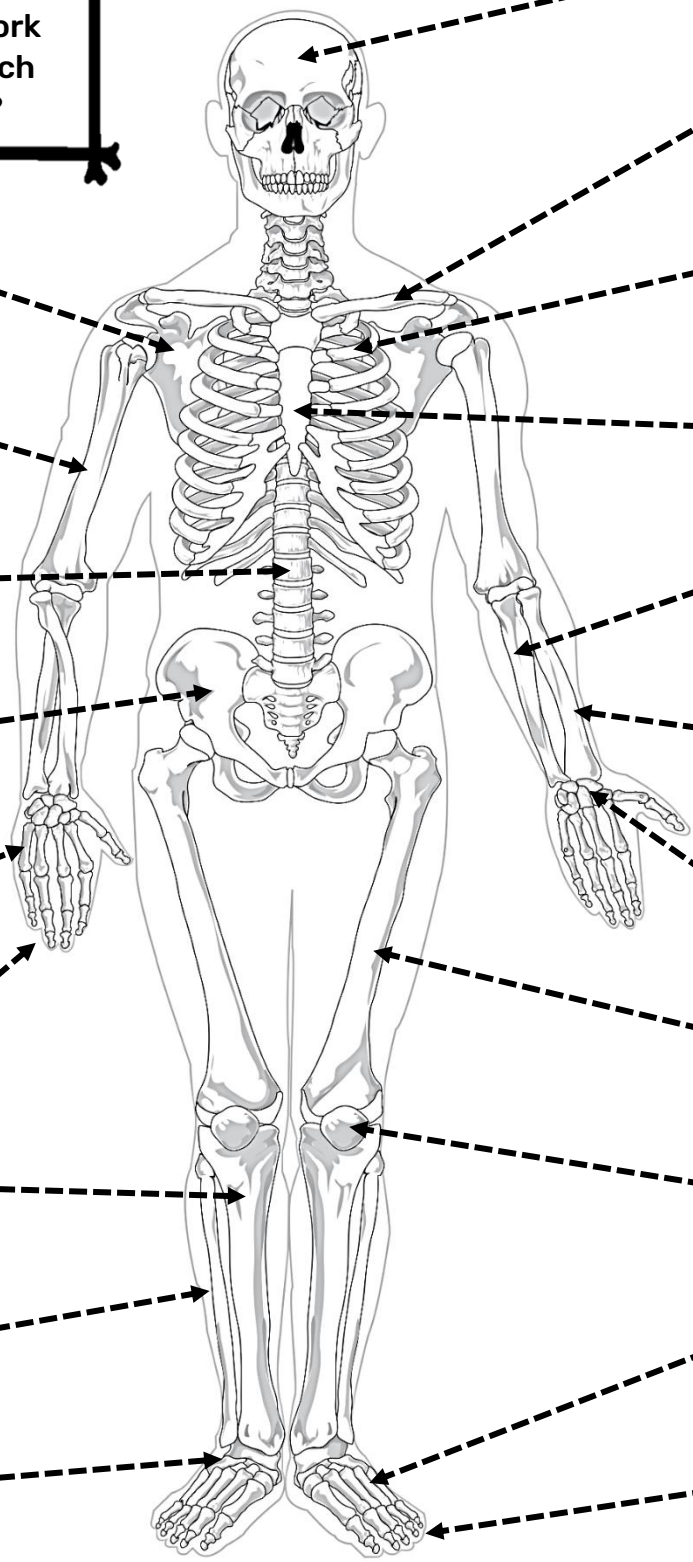


BONES IN THE HUMAN BODY

We have 206 bones in our bodies, but can you work out which bone is which from the list below?

- Scapula
- Humerus
- Vertebra
- Pelvis
- Metacarpals
- Phalanges
- Tibia
- Fibula
- Tarsals

- Skull
- Clavicle
- Ribs
- Sternum
- Ulna
- Radius
- Carpals
- Femur
- Patella
- Metatarsals
- Phalanges



- | | | | | |
|----------|-------------|-------------|-------------------------|----------|
| Fibula | Scapula | Pelvis | Humerus | Vertebra |
| Carpals | Metacarpals | Radius | Skull | Ribs |
| Sternum | Femur | Metatarsals | Tarsals | Ulna |
| Clavicle | Tibia | Patella | Phalanges (Two Answers) | |